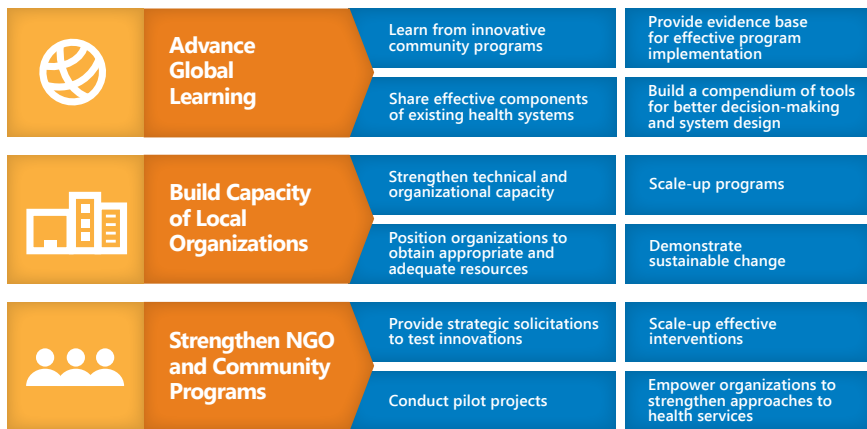


LEADERSHIP, CAPACITY BUILDING, AND  
GRANT-MAKING FOR COMMUNITY-BASED  
FAMILY PLANNING AND HEALTH SYSTEMS



### APC's Three-pronged Approach to Improving Community-based Health Programs



APC, through its capacity building, grants management, and commitment to advancing global learning improves local capacity and strengthens local systems to ensure community health systems are appropriately scaled and thrive.

Community-Based Access to Injectables (CBA2I) is an example of applying task-sharing to expand method mix to better meet the contraceptive needs of couples. To build the evidence base for this approach, APC identifies and promotes CBA2I best practices in scaling up distribution of injectable contraceptives via community health workers and pharmacies. APC also supports strategic policy change efforts to encourage the uptake of CBA2I.



### WHAT IS APC?



Advancing Partners & Communities (APC) advances and supports community programs that improve the overall health of communities and achieve other health-related impacts, especially in relationship to family planning. The project increases access to community-based health services, spanning a spectrum of health issues.

Implemented by JSI Research & Training Institute, Inc., in partnership with FHI 360, APC advances global learning in community-based programming, executes and manages small and medium-sized sub-awards for the United States Agency for International Development (USAID), and supports procurement reform by building the organizational and technical capacity of organizations. The project's grant mechanism and capacity building assistance can be used to strengthen local non-government organizations (NGOs).



APC's work spans across a wide spectrum of health areas, addressing reproductive health; maternal, newborn and child health; HIV; and community health systems, along with strengthening gender programs and youth initiatives—with community-based family planning as a particular focus. The changing landscape of health systems, combined with the shortage of highly skilled health providers, has created opportunities for scaling-up task sharing the delivery of health services, including family planning and contraceptives, at the community level.

### APC SERVICES

#### Technical

- Designing and implementing public and NGO community-based strategies and programs.
- Providing technical assistance to community-based programs for project design, service integration, and program scale-up.
- Conducting assessments.
- Supporting community-based organizations to strengthen services and adopt high impact practices.



### WHY COMMUNITY-BASED APPROACHES?

With the global shortage of healthcare workers, many individuals do not have access to health facilities or highly-skilled medical professionals. Focusing on strengthening community health systems and community health service providers has been shown to expand the reach of the formal health system and increase access to essential health services.

#### Grant Management

- Conducting open and targeted competitive grant solicitations.
- Preparing applicable documentation for executing sub-awards.
- Supporting USAID missions to manage awards to local organizations.



ADVANCING PARTNERS  
& COMMUNITIES

Advancing Partners & Communities (APC)

JSI Research & Training Institute, Inc.

1616 Fort Myer Drive, 16th Floor

Arlington, VA 22209

Tel. 703-528-7474

Email: [info@advancingpartners.org](mailto:info@advancingpartners.org)

Web: [www.advancingpartners.org](http://www.advancingpartners.org)



**USAID**  
FROM THE AMERICAN PEOPLE



JSI Research & Training Institute, Inc.

**fhi360**  
THE SCIENCE OF IMPROVING LIVES

*\*Advancing Partners & Communities (APC) is a five-year cooperative agreement funded by the U.S. Agency for International Development under Agreement No. AID-OAA-A-12-00047, beginning October 1, 2012. APC is implemented by JSI Research & Training Institute, Inc., in collaboration with FHI 360.*